






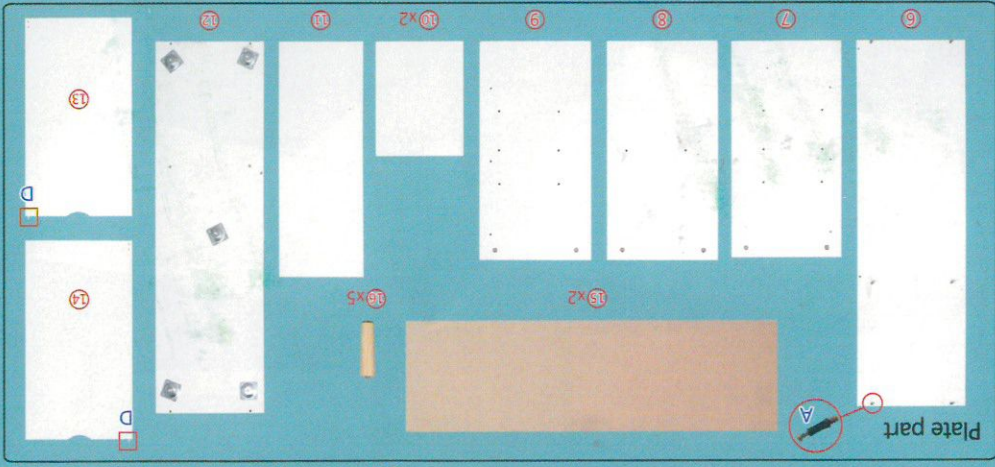
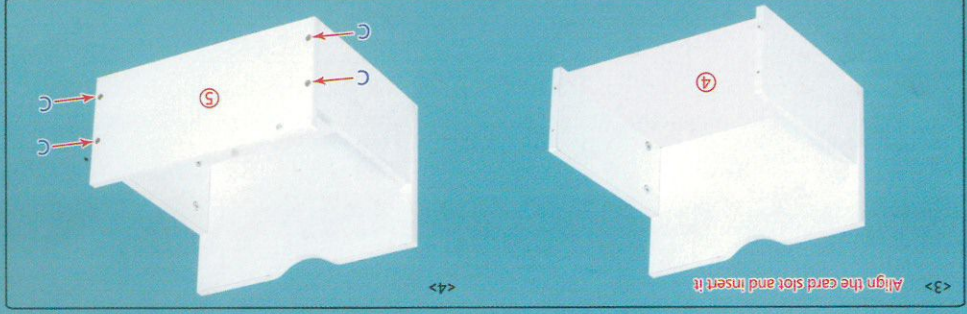
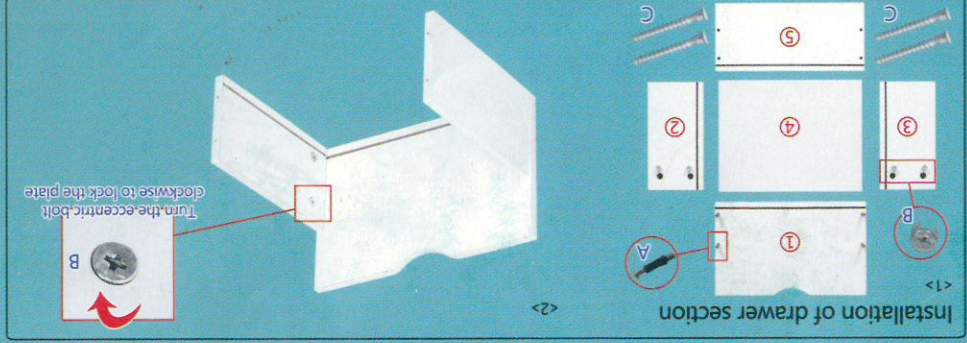
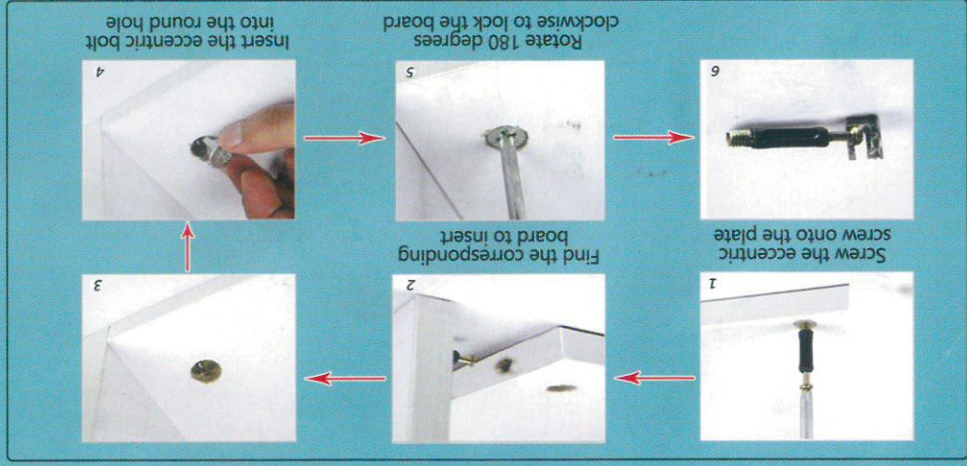


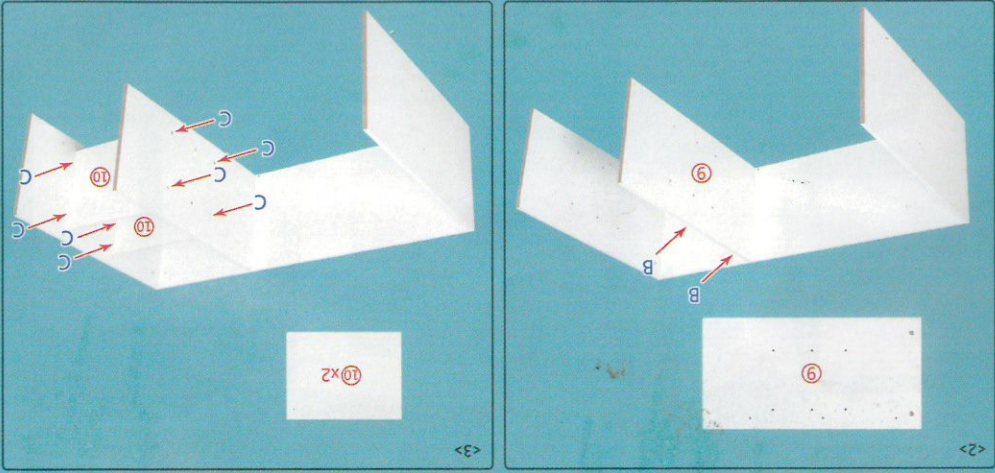
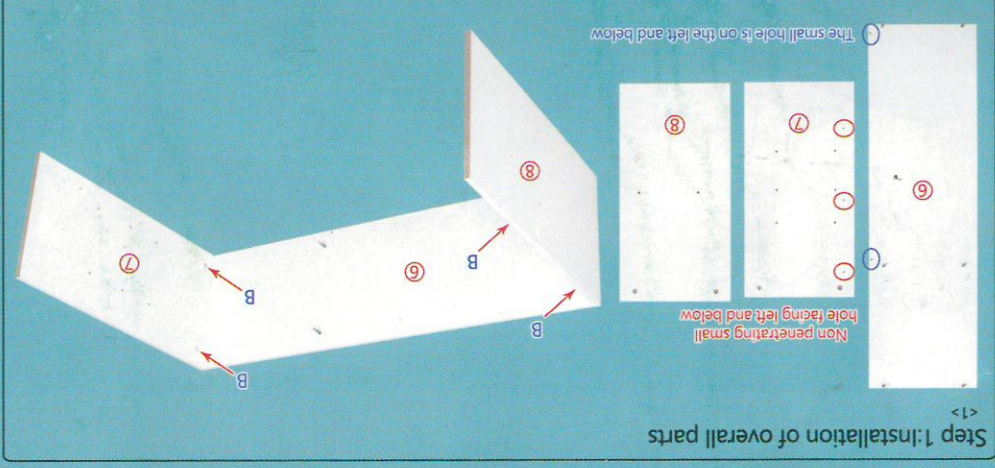
Installation diagram of dining cabinet

	A*18 Eccentric screw
	B*18 Eccentric bolt
	C*30 3.5CM self tapping screw
	D*8 Metal pin
	E*2 Door pivot shaft
	F*20 Little nail
	G*4 Minimum self tapping screw

Eccentric installation principle



Step 1: Installation of overall parts



BC-04

