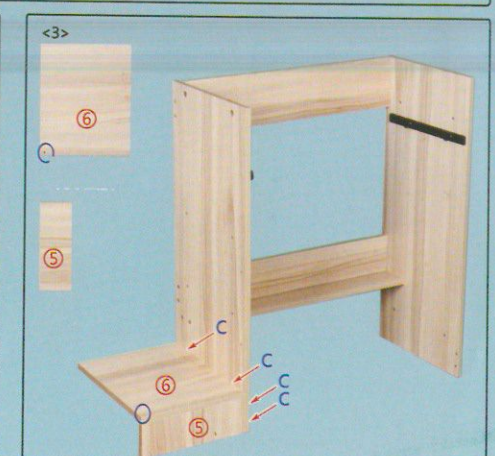
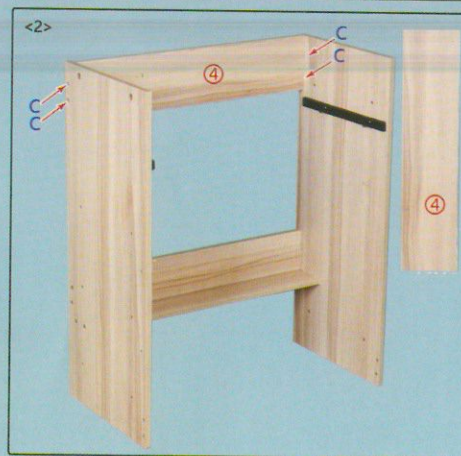
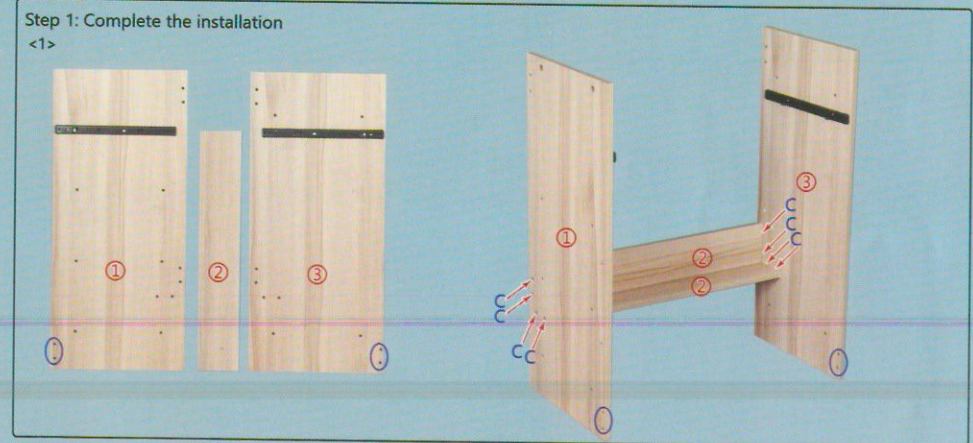
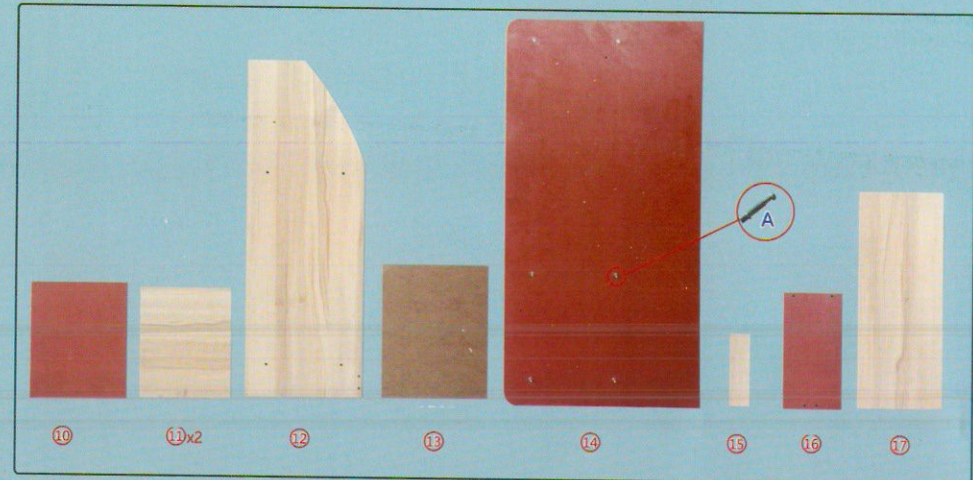
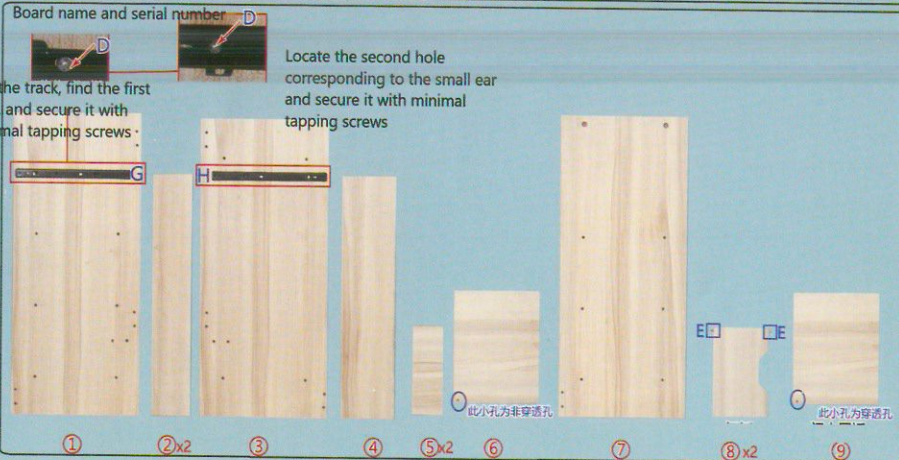
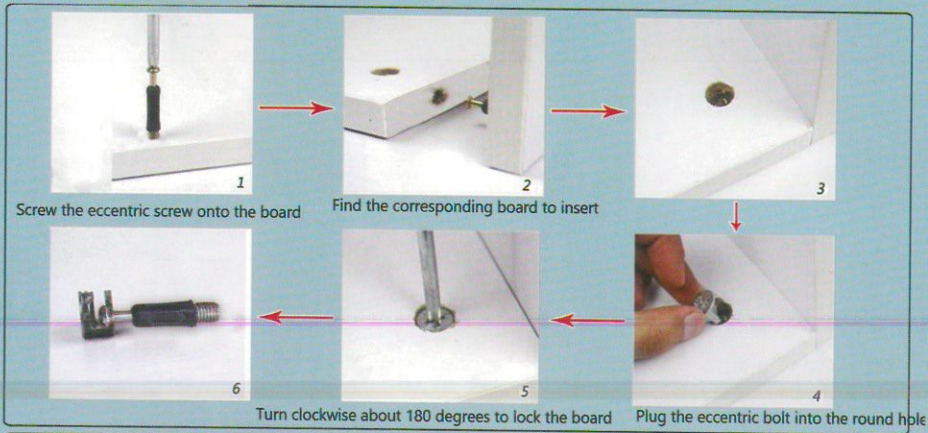


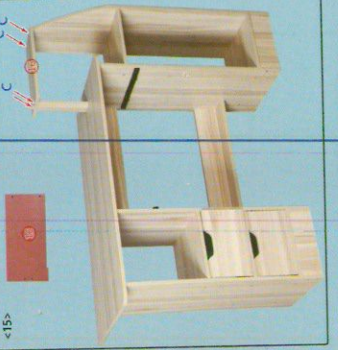
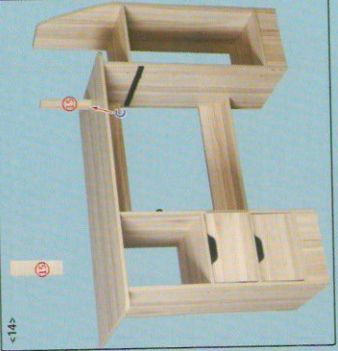
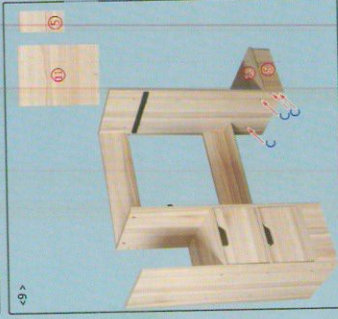
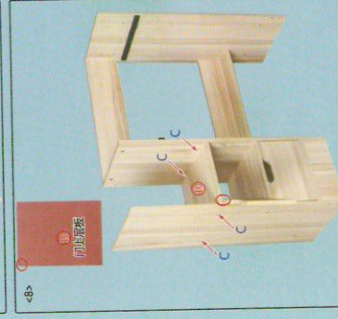
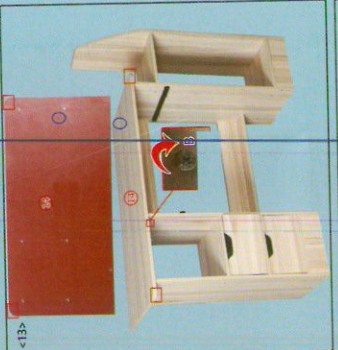
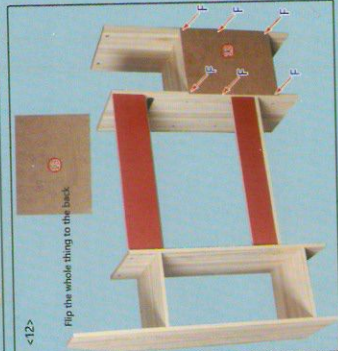
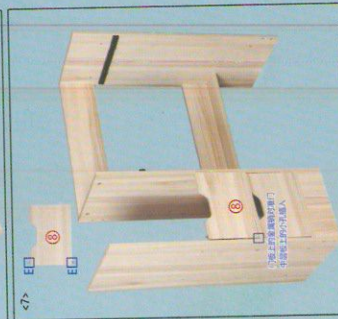
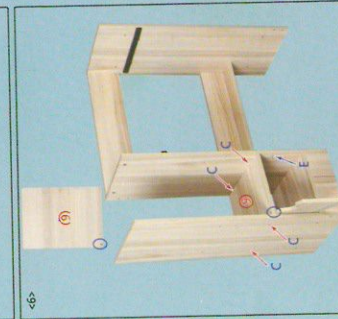
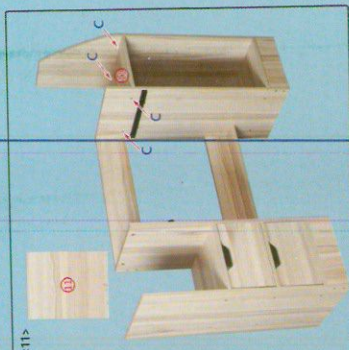
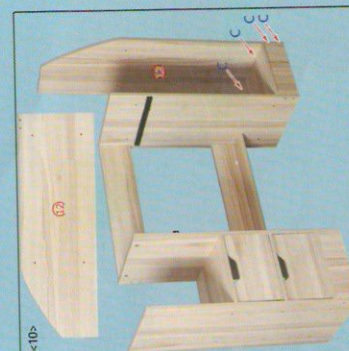
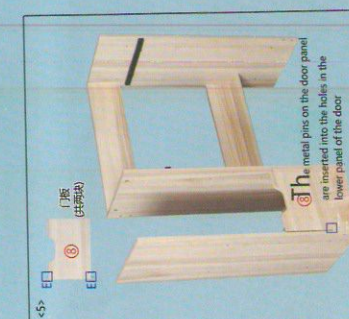
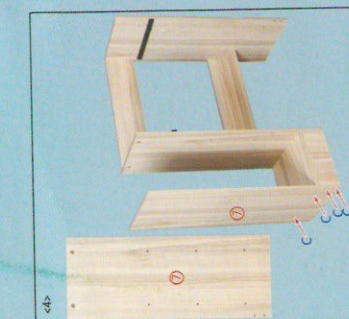
A156W 120cm specification

| | | | | | | | |
|-----------------|----------------|---------------------------|-----------------------------|-----------|------------|-----------------|----------------------|
| | | | | | | | |
| Eccentric screw | Eccentric bolt | 3.5cm self-tapping screws | Minimum self-tapping screws | Metal pin | Small nail | Left disk track | Right keyboard track |
| A*6 | B*6 | C*45 | D*8 | E*6 | F*6 | G*1 | H*1 |

Warm tip: tighten the screws by seven points during installation, and then tighten them after all is co

Installation principle of eccentric parts:





There are no holes in the keyboard board. The small ears hold the keyboard board and screw it in from the opposite side with minimal self-tapping screws